



172 Sulfur



122
Gypsum



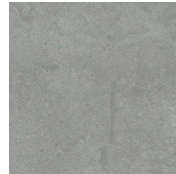
172
Sulfur



268
Sandstone



636
Calcite



925
Pebble



832
River Rock



888
Schist



999
Onyx

DESIGN

Product Type Loose Lay Resilient Tile
 Overall Gauge 0.20" (0.5mm)
 Wear Layer 20 mil (0.5mm)
 Finish M-Force™ Ceramic Enhanced Urethane
 Texture Light Emboss
 Edge Profile Square
 Colors Available 8
 Size 36" x 36" (914.4mm x 914.4mm)
 Antimicrobial Yes
 Packaging 36sf/ctn(3.34m2/ctn); 4pcs/ctn; 63.48lbs/ctn(28.79kg/ctn)
 Installation Loose Lay with Perimeter Glue
 Recommended Adhesive Perimeter glue only with MS160 Spray. May also use M950 Acrylic

SELLING FEATURES

- Commercial grade wear layer and M-Force™ Ceramic Enhanced Urethane
- Oversize formats look great and install over large areas quickly
- Non-skid backing eliminates the need for full spread adhesive
- Immediate move-in
- Installs over slabs with up to 95% RH
- IIC Rating of 57 without underlayment
- 59% Recycled Content
- QuickShip

PERFORMANCE

Construction Commercial Grade Floating Resilient Tile
 Classification ASTM F1700 - Class III, Type A - Smooth, Type B - Embossed
 Squareness ASTM F2055 - Passes - 0.010 in. max
 Size and Tolerance ASTM F2055 - Passes - ± 0.016 in. per linear foot
 Thickness ASTM F386 - Passes - Nominal ± 0.005 in.
 Flexibility ASTM F137 - Passes - ≤ 1.0 in., no cracks or breaks
 Dimensional Stability ASTM F2199 - Passes - ≤ 0.024 in. per linear foot
 Static Load Limit ASTM F970 - Passes - modified - 1000 psi
 Residual Indentation ASTM F1914 - Passes - Average less than 8%
 Slip Resistance ASTM D2047 - Passes - > 0.6 Wet, 0.6 Dry
 Resistance to Chemicals ASTM F925 - Passes - No Change or Slight Change
 Resistance to Light ASTM F1515 - Passes - ΔE ≤ 8
 Resistance to Heat ASTM F1514 - Passes - ΔE ≤ 8
 Critical Radiant Flux ASTM E648 - Passes - ≥ 4.5 watts/cm², Class 1
 IIC Rating 57 (over 6" concrete and drop ceiling)

SUSTAINABILITY

Certification FloorScore® Certified
 Recycled Content Minimum 37% Pre-Consumer, 22% Post-Consumer

SERVICE

Warranties Limited 10 Year Commercial