

Protect - Rejuvenate - Restore Roll Doors

and

other "factory coated" metal surfaces

Featuring new Nano Particle

Ceramic Quartz Coatings

NEW!

All From **1** Supply

THE PROBLEM

Ultraviolet rays from the Sun cause even factory applied coatings to oxidize. The binders and pigments begin to break down, causing the surface to look dull and dry. Dust and grime are not easily rinsed or wiped off due to the increased roughness and porosity of the degraded coating. With time, oxidation will break down the paint's surface and form a chalky residue. This chalking is an indication of the paint's age and exposure to the elements.

If left untreated, this process will eventually compromise the coating and require the door to be repainted.

Never let your factory finished metal get to this stage!

THE SOLUTION!

An application of Endura-Glaze ceramic clear coat forms a protective barrier between the elements, including harmful UV rays, and the door's painted surface. Dust and dirt are easily wiped or rinsed off. The surface feels smooth and slick, and water beads up and slides off the door. Properly maintained doors will never need to be repainted and will always have that fresh "like new" look.

Learn More! ▶

UV Oxidizes Paint Causing Loss of Color, Shine & Protection

Armor & Protect Your Door's Finish ...

...or Restore & Rejuvenate Faded & Chalky Older Doors!

Protective Clear Coating for Newer* Doors

With

Nano-Particle Ceramic Quartz Technology

Apply to newer* and restored metal surfaces to protect and extend the life cycle.

Re-apply every 6 - 12 years on a maintenance cycle for a lifetime finish!

Apply at a fraction of the cost of paint and other clear restoration products.

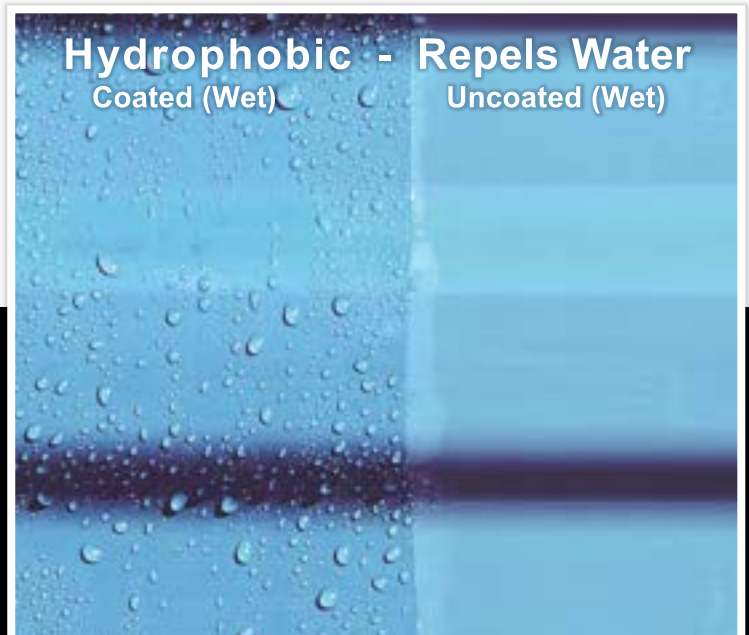
**new or doors up to 10 years old that have no significant chalk*

Endura-Glaze

Costs Less - Does More - Lasts Longer

- ⇒ Protect against color fading, extend the door life indefinitely**
- ⇒ Creates a “wet look” that enhances the color with a semi-gloss shine
- ⇒ Makes doors easier to clean; dust and dirt easily wipe off
- ⇒ Superior protection from the sun, grime, and pollution
- ⇒ Makes the surface “Super Hydrophobic”, water just beads up and slides off
- ⇒ Self re-wetting - easy to repair or easily add additional coats even years later
- ⇒ Easy “do-it-yourself” application OR applied by a painting contractor
- ⇒ Scratches and scuff can be easily repaired

****When applied at recommended intervals. *Not for use on automobiles.***



Restoration Solutions for Chalky Doors

Apply to properly prepared faded and chalky surfaces

Door Restore Express Solution Acrylic Finish

- ◆ Medium gloss finish
- ◆ Easy to touch-up
- ◆ Self re-wetting—easily repaired
- ◆ DIY Friendly
- ◆ Easy to clean surface
- ◆ 4-8 year life
- ◆ Recoatable with Endura-Glaze

NOTE: can be damaged by strong solvents but is easily repaired. Not for use on automobiles.

Endura-Bright Ceramic Coating

- ◆ Semi-gloss finish
- ◆ Easy to touch-up
- ◆ Self re-wetting—easily repaired
- ◆ DIY Friendly
- ◆ Easy to clean surface
- ◆ Nano particle ceramic technology
- ◆ Super Hydrophobic
- ◆ 6-12 year life
- ◆ Recoatable with Endura-Glaze

NOTE: can be damaged by strong solvents but is easily repaired. Not for use on automobiles.

Chem-Bake Ultra Clear 2K Polyurethane

- ◆ Super hi-gloss finish
- ◆ Professional application recommended
- ◆ Easy to clean surface
- ◆ Most durable finish
- ◆ Also available in OEM colors
- ◆ 12-15 year life
- ◆ Recoatable with Endura-Glaze
- ◆ Solvent resistant



Zap-It Chalk & Grime Buster Heavy-Duty Chalk Remover

Low suds cleaner and surface treatment that can be used in varying concentrations to remove chalk and grime in preparation for painting or clear coating.

- **Less Rinsing** - formulated for low suds
- **Economical** - concentrated for dilution
- **Versatile** - spray, soak or wipe on
- **Effective** - works on dirt, grime, tar, inks and as a chalk remover for preparing roll-up doors for repainting!

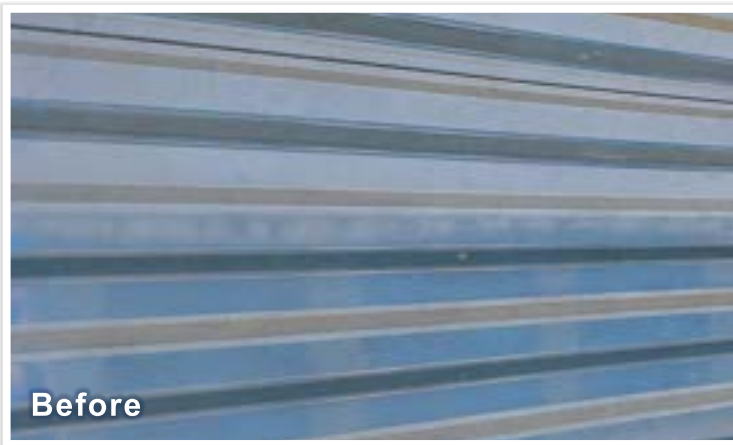
Wash 'N Roll for Cleaning Roll Doors

"No-Rinse" Streak Free Maintenance Cleaning Concentrate

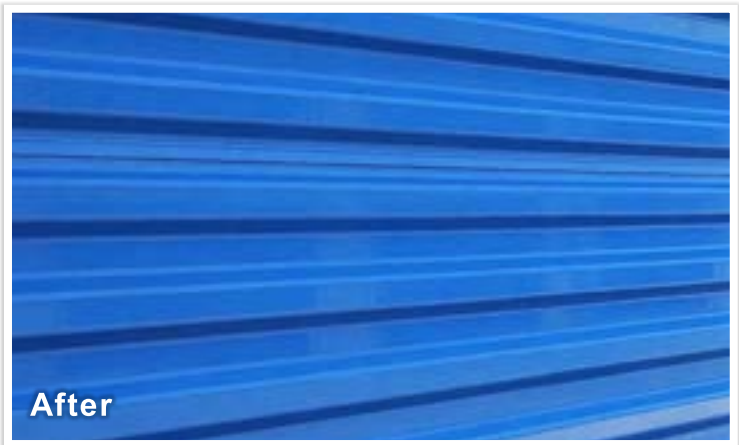
Remove surface dirt & pollutants in one step with this easy-to-use no-streak door wash.

- No manual drying required
- No water-rinse required
- Well maintained doors can be cleaned with a single pass
- Easy to apply with handheld power washers
- No special equipment needed
- Economical - 1 gallon does up to 80 doors!
- May extend door life by removing grit & pollutants that can accelerate wear and get baked into the door's surface

Simple, economical and easy to use!



Before



After

Touch-Up Paint & Coatings for Self-Storage



Perfect for do-it-yourselfers, maintenance crews, and contractors for touch-up between repaints or for scratches when you are clear coating

- Long-lasting durable colors
- Easy application with aerosol cans or brush
- Dries fast
- Matches a wide variety of current & legacy OEM manufacturer door colors, and Endura-Clad colors



Before



After